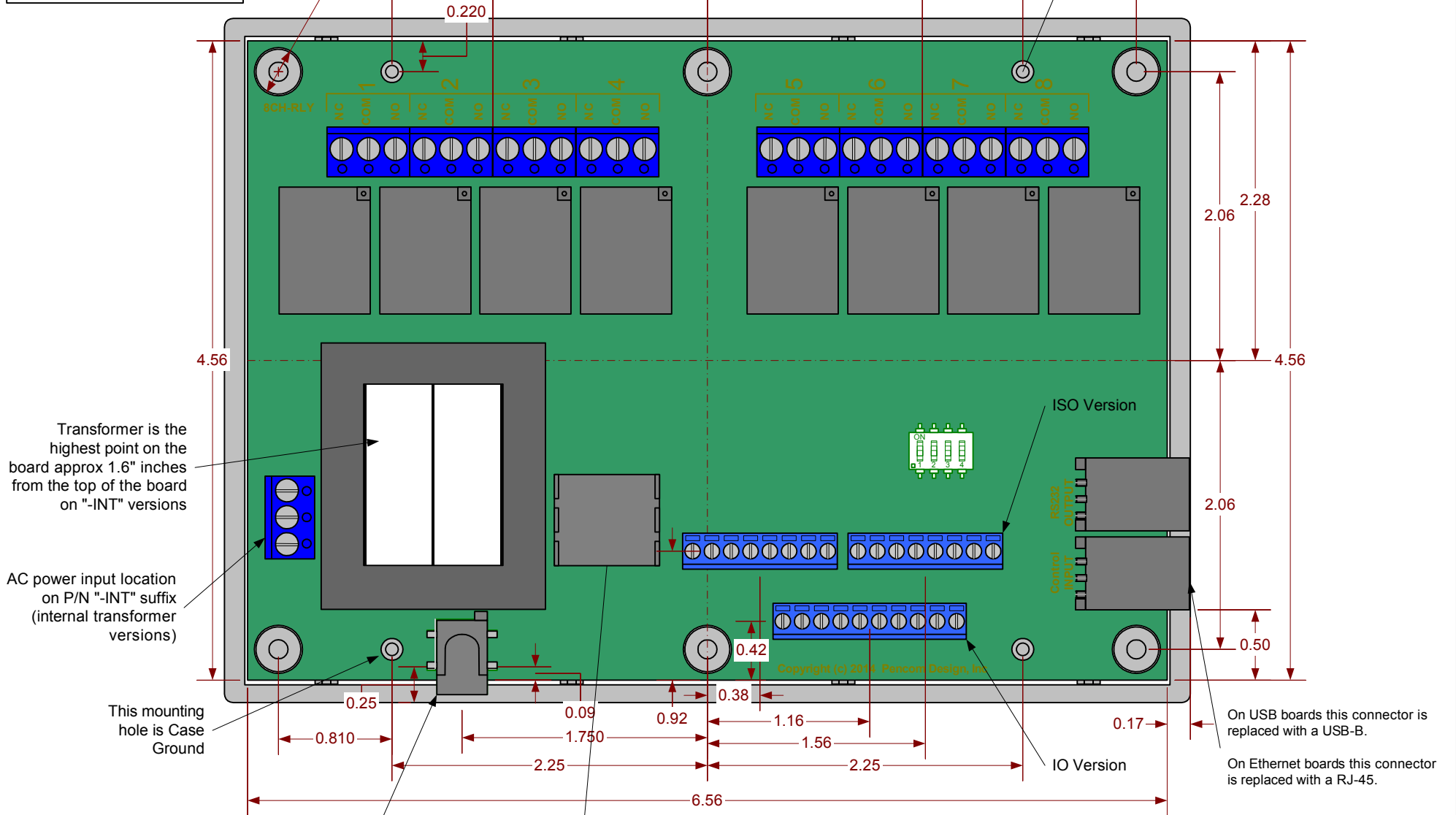


Enclosure option
 ABS Plastic, 1.52" High
 Note: only fits boards with "-
 EXT" suffix in part number
 Will NOT fit units with the on-
 board power transformer

Clearance Hole 6 Places (NOT for mounting board) Ø 0.3438

Mounting holes 4 Places (Ø 0.1562 for #6 screw)



All 8 Ch Relay Boards

12-11-14 AEJ REVISION F1

O.D. Board
 Dimensions
 +0.0" / -0.010"



Pencom Design, Inc.
 PO Box 645
 Trumbauersville, PA 18970
 Copyright (C) 2014